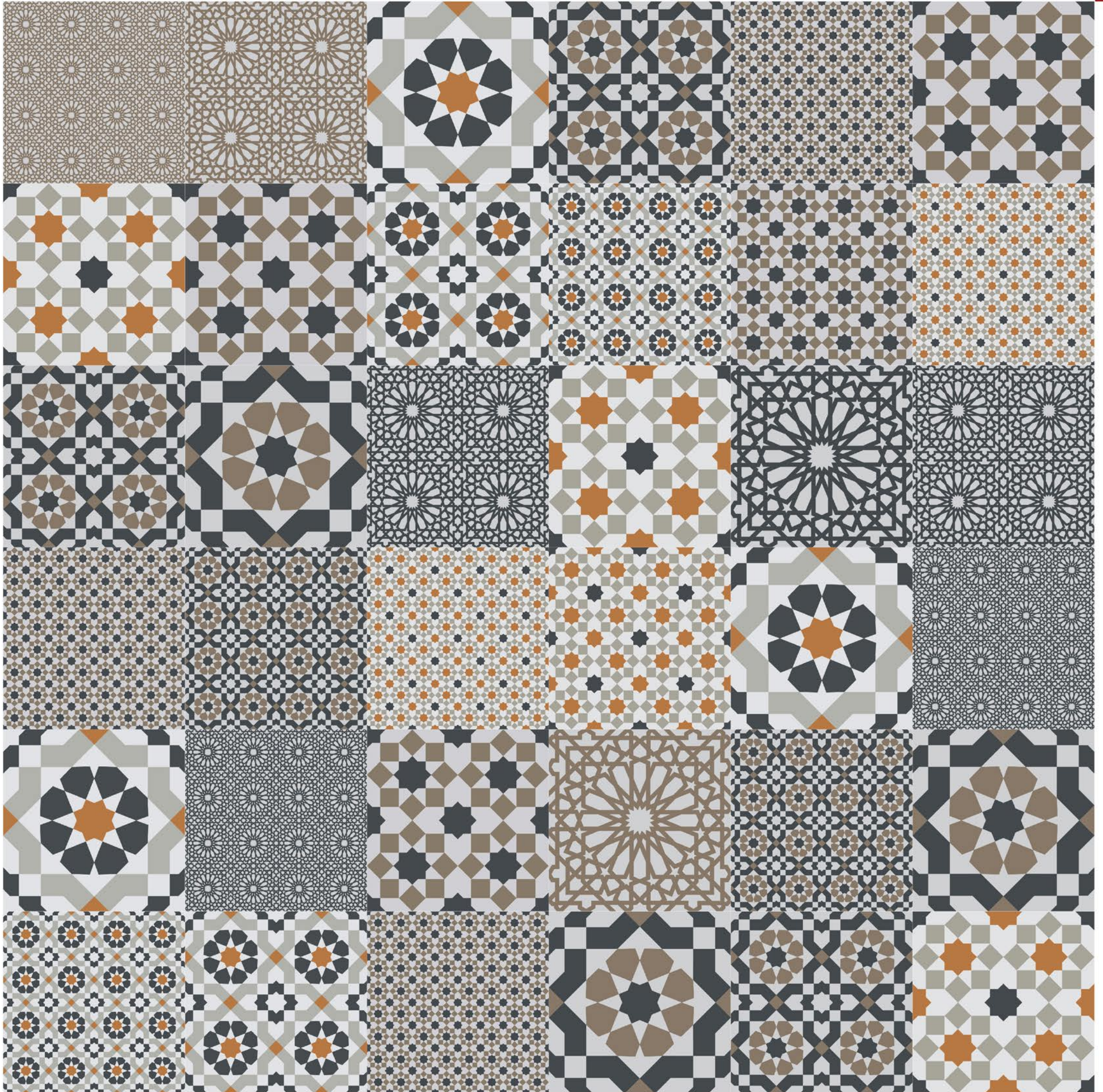




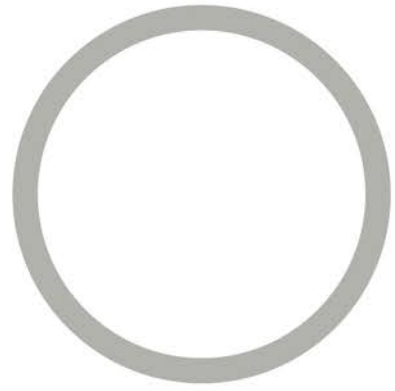
ETHNIC 1.0

MARAKKECH

KIMGRES
PORCELAIN
COLLECTION

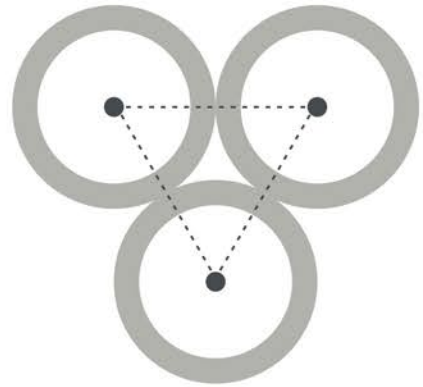


 **ETHNIC 1.0** **MARAKKECH**
KIMGRES
PORCELAIN
COLLECTION



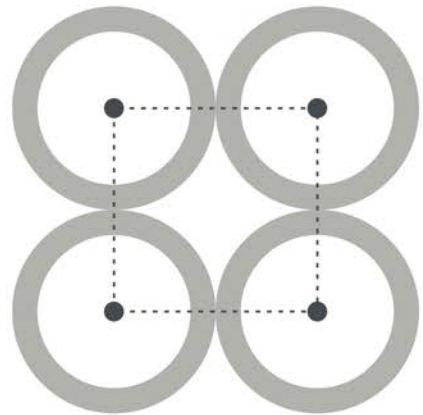
THE CIRCLE

is an important shape in Islamic religion and Islamic geometric design. It symbolizes wholeness, unity and perfection.



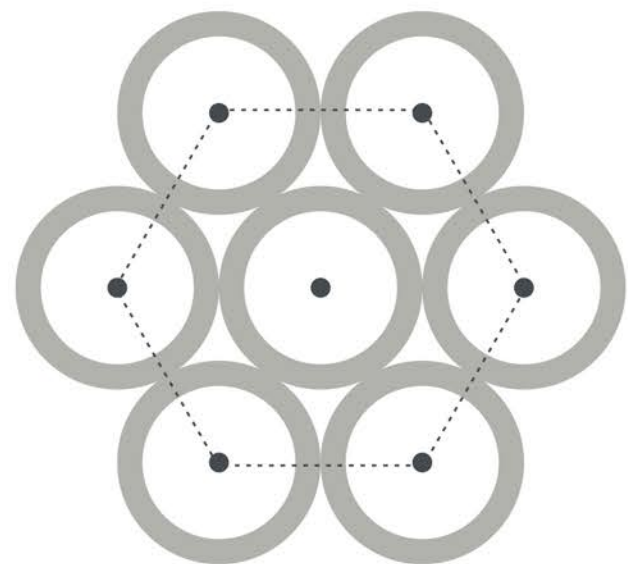
THE TRIANGLE

is the Islamic symbol of consciousness. The points symbolize the knower, the act of knowing and the known.



THE SQUARE

symbolizes the four elements:
EARTH
AIR
FIRE
WIND



THE HEXAGON

is close in shape to the circle and is associated with the perfection of the circle. It is therefore a symbol of heaven.



MY COMPANIONS ARE LIKE (GUIDING) STARS. WHOMSOEVER YOU FOLLOW, YOU WILL BE GUIDED (ON THE RIGHT PATH).



STARY GUIDE

AS ONE OF THE MOST HIGHLY-USED YET OFTEN OVERLOOKED MATERIAL IN BUILDING CONSTRUCTION, CONCRETE HAS BEEN GETTING RAVE REVIEWS LATELY FROM ARCHITECTS AND INTERIOR DESIGNERS EVERYWHERE AS IT OFFERS THEM A PERFECT UNION BETWEEN NATURAL MATERIALS AND A MORE MODERN, INDUSTRIAL VIBE.

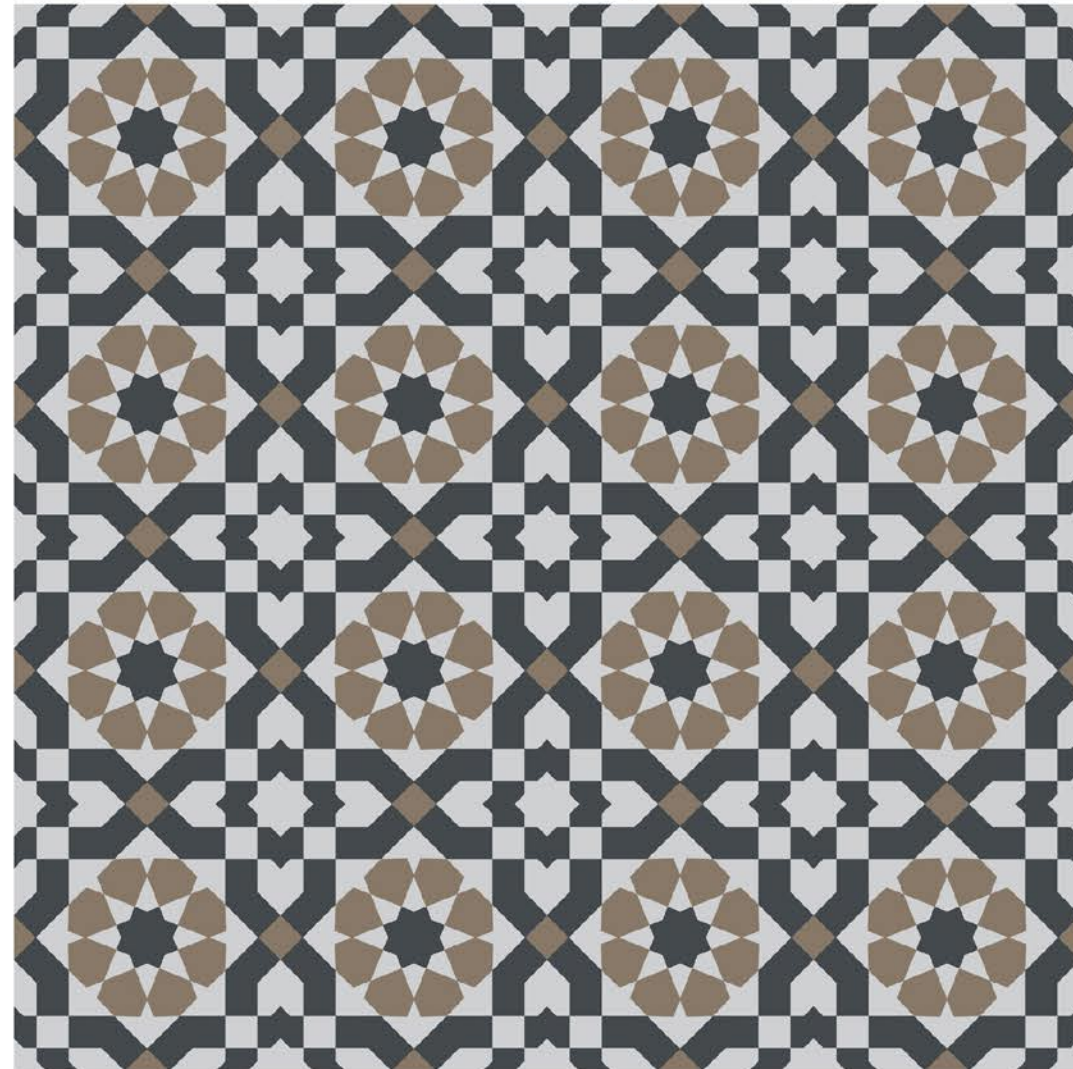
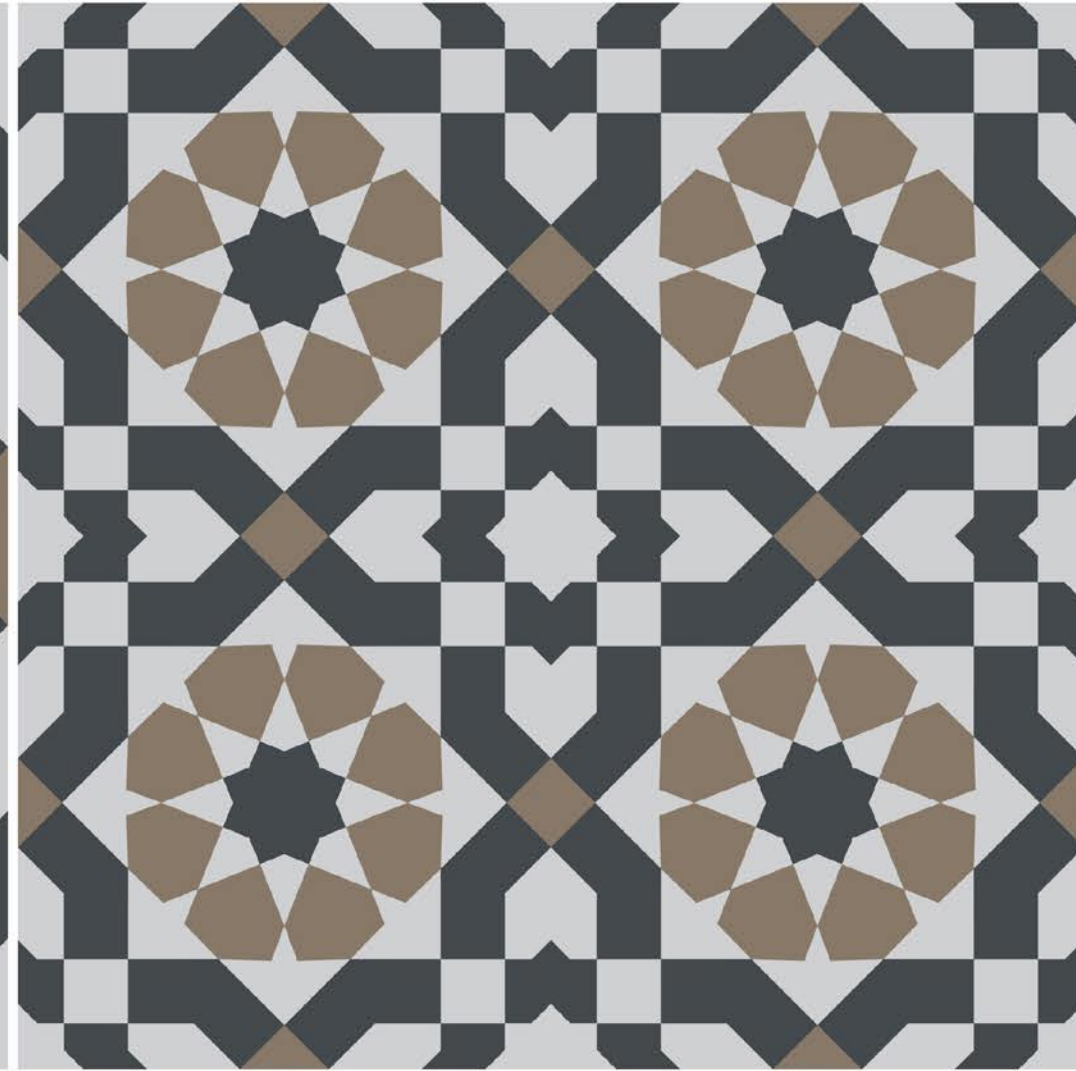
AS ONE OF THE MOST HIGHLY-USED YET OFTEN OVERLOOKED MATERIAL IN BUILDING CONSTRUCTION, CONCRETE HAS BEEN GETTING RAVE REVIEWS LATELY FROM ARCHITECTS AND INTERIOR DESIGNERS EVERYWHERE AS IT OFFERS THEM A PERFECT UNION BETWEEN NATURAL MATERIALS AND A MORE MODERN, INDUSTRIAL VIBE.

CATARINA SILVER



ETHNIC 1.0

MARAKKECH
KIMGRES
PORCELAIN
COLLECTION



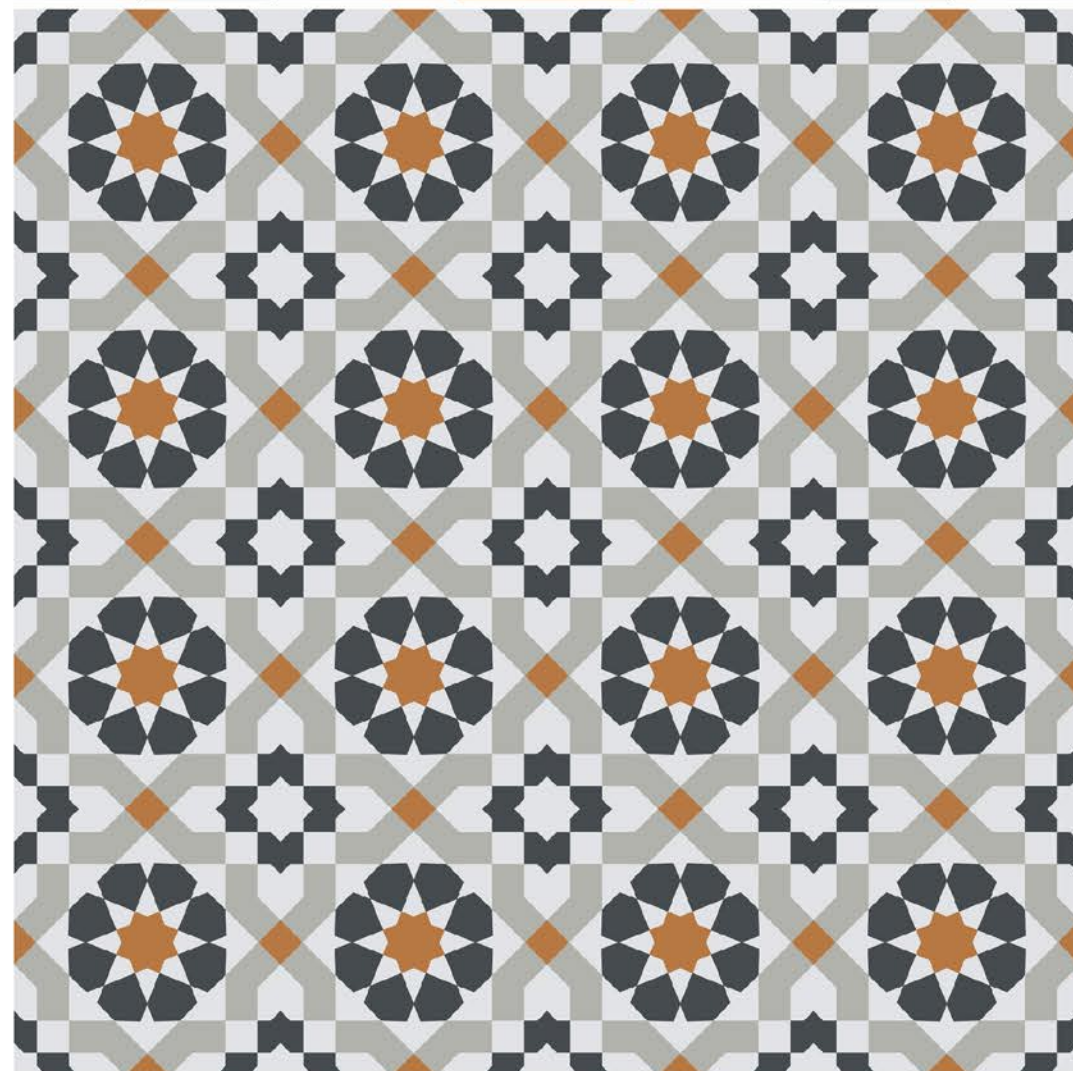
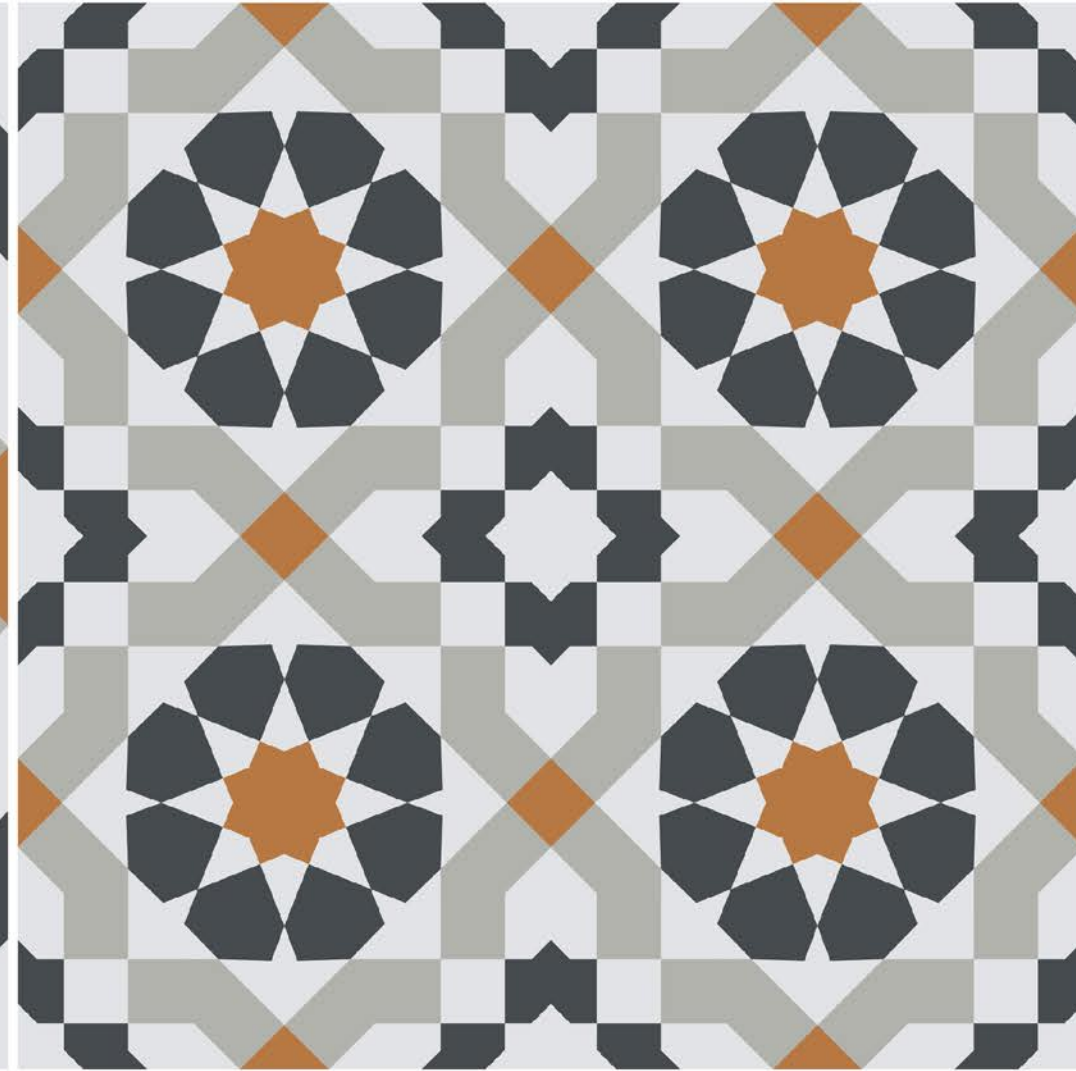
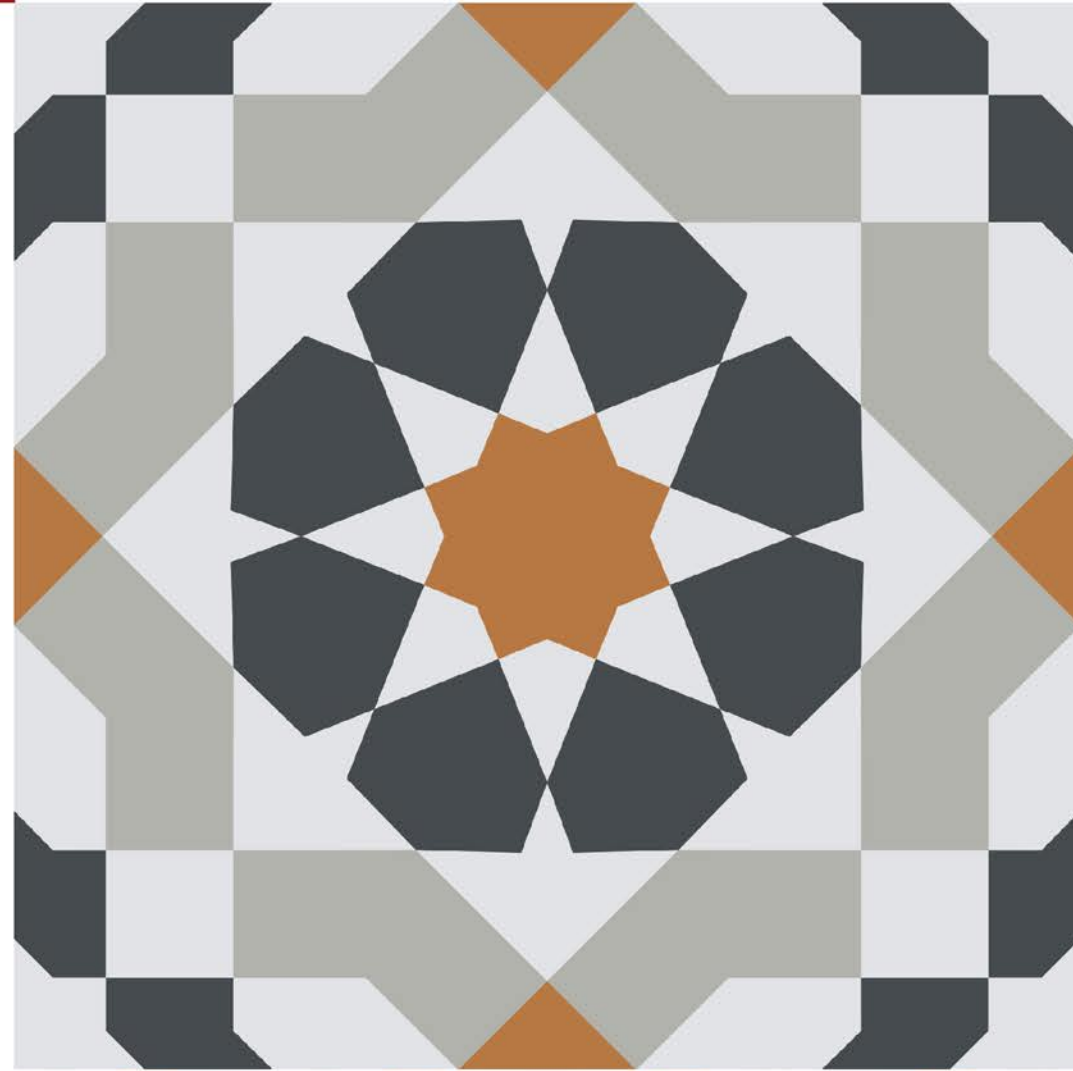
CATARINA
SILVER I
A29W11DG

CATARINA
SILVER II
A29W12DG

CATARINA
SILVER III
A29W13DG



CATARINA COPPER



**CATARINA
COPPER I**
A29W11LG

**CATARINA
COPPER II**
A29W12LG

**CATARINA
COPPER III**
A29W13LG

ETHNIC 1.0 MARAKKECH KINGRES PORCELAIN COLLECTION

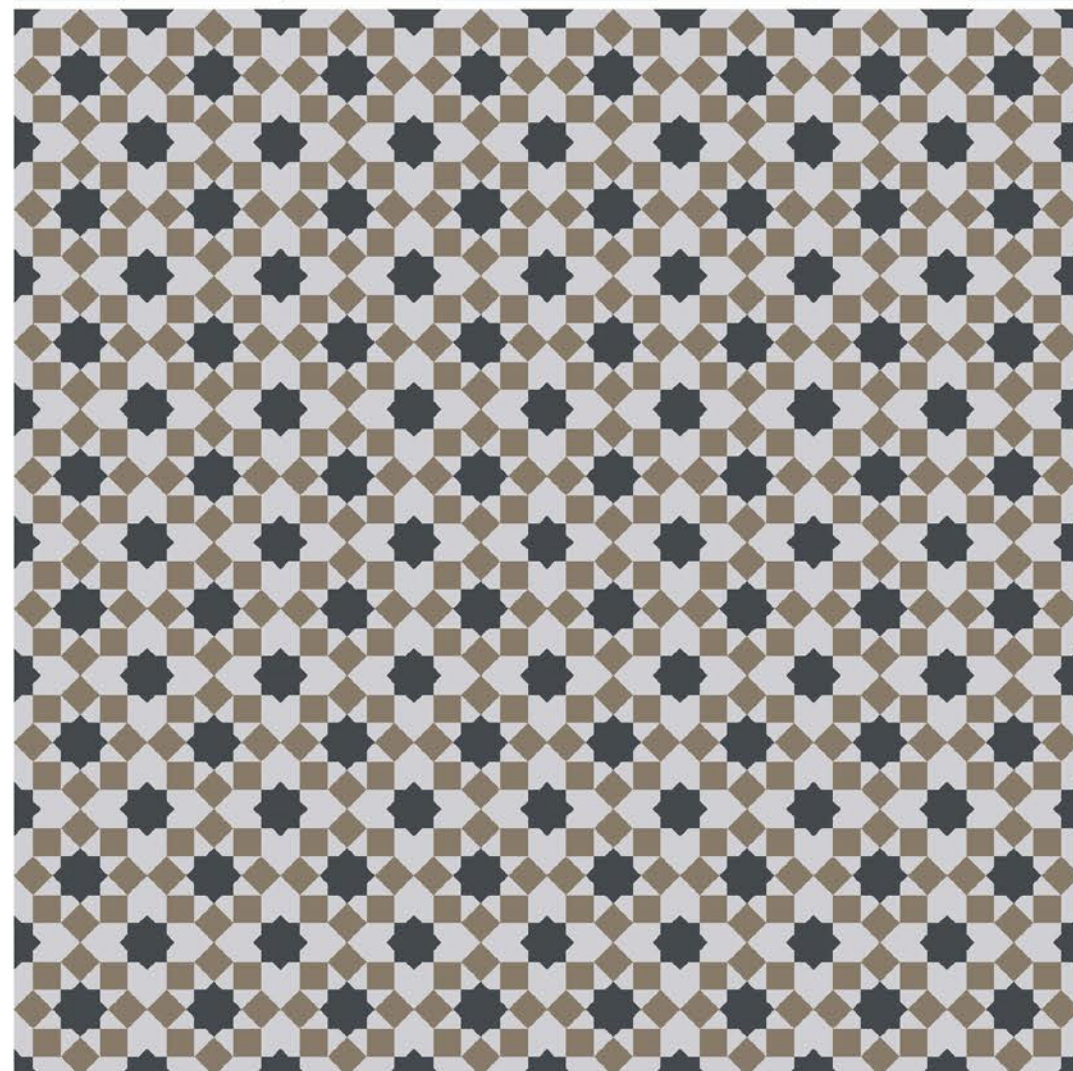
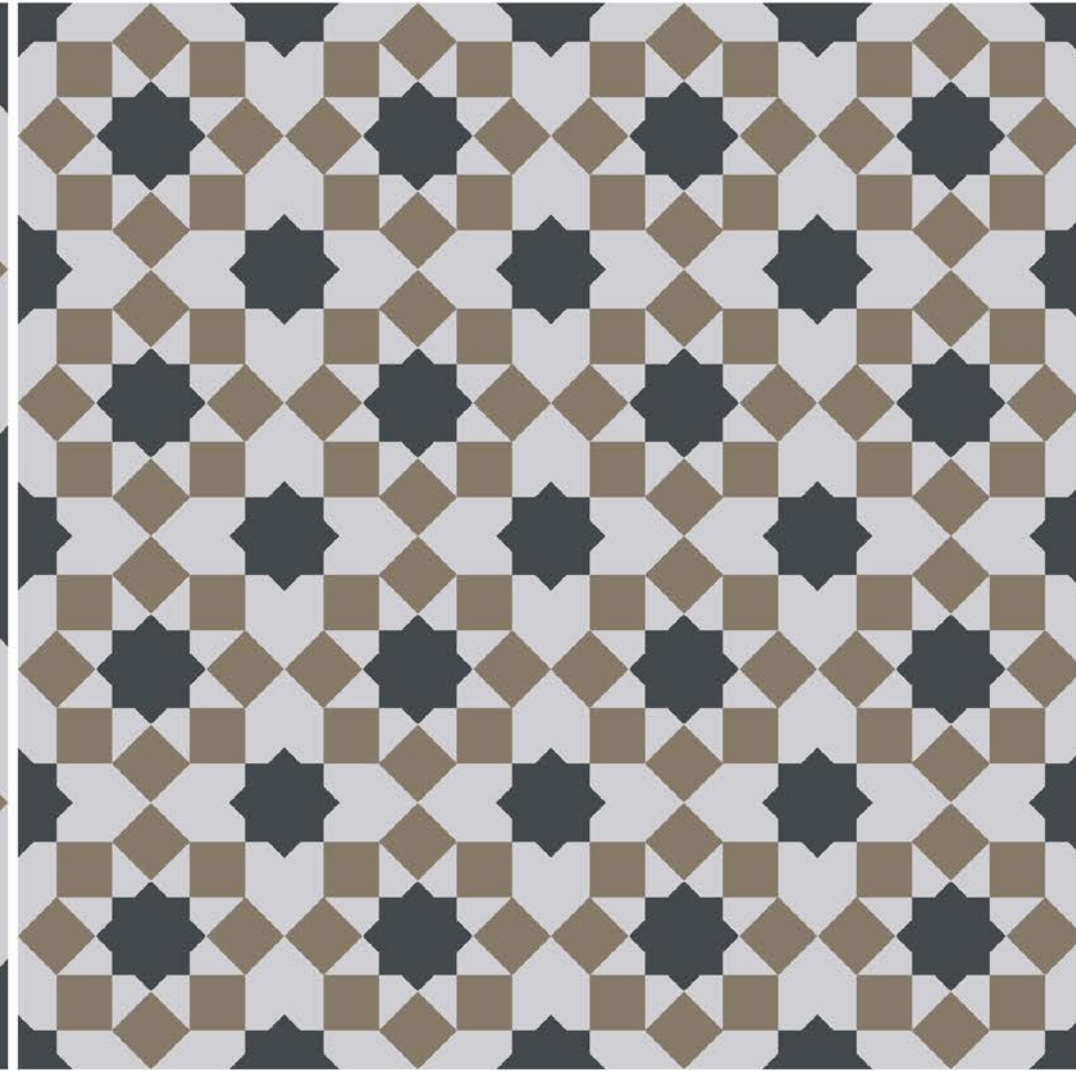
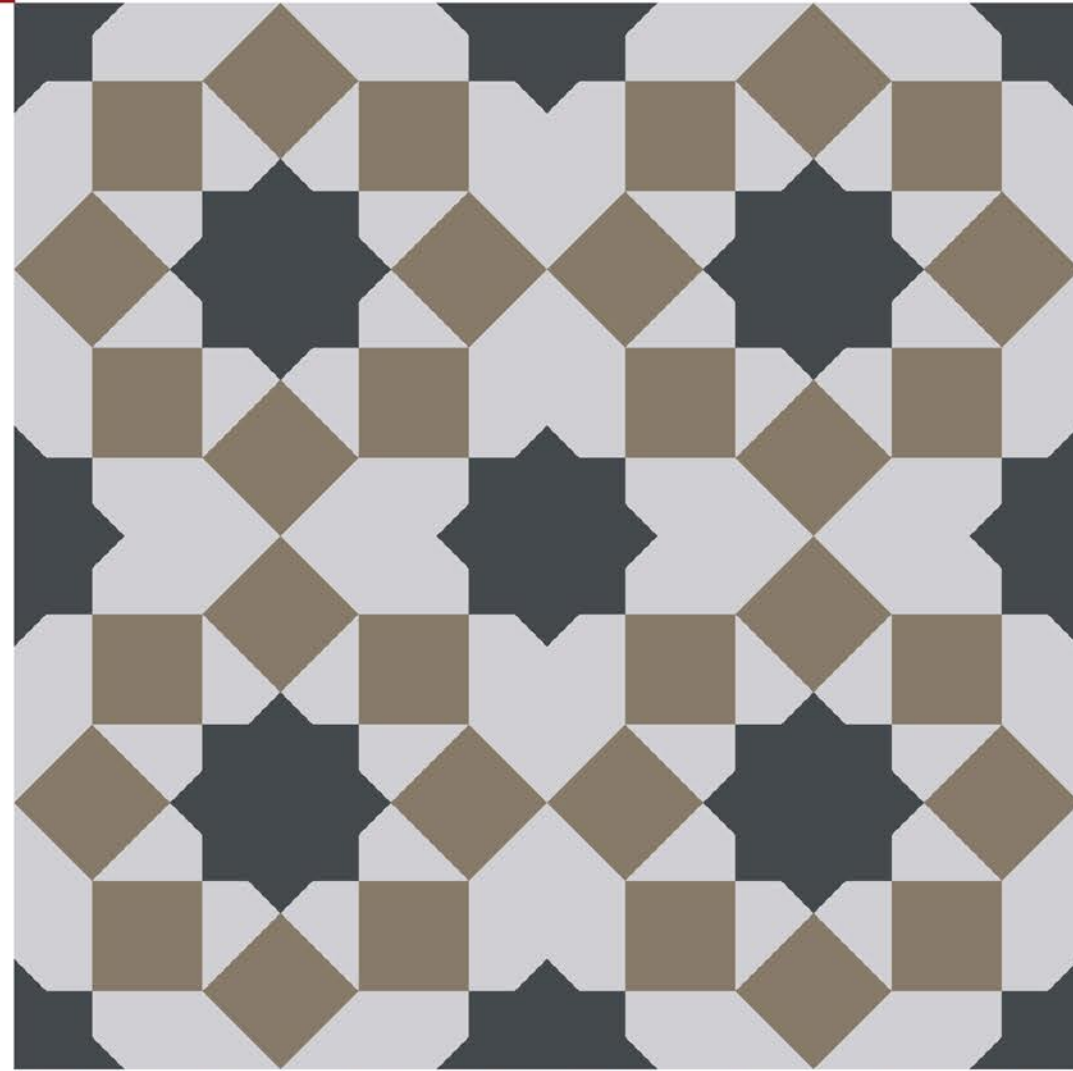


SIERRA SILVER



ETHNIC 1.0

MARAKKECH
KINGRES
PORCELAIN
COLLECTION



SIERRA
SILVER I
A29W21DG

SIERRA
SILVER II
A29W22DG

SIERRA
SILVER III
A29W23DG

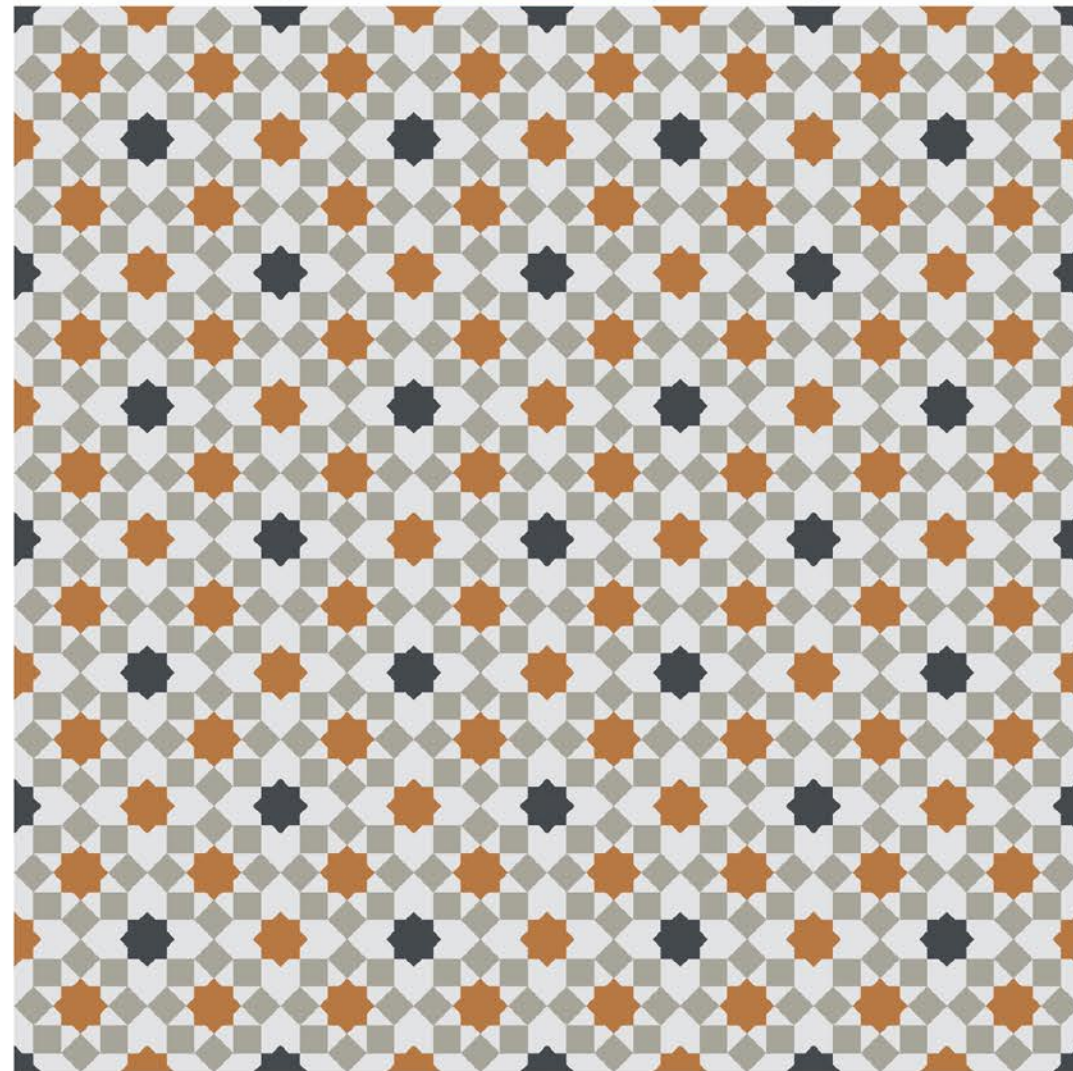
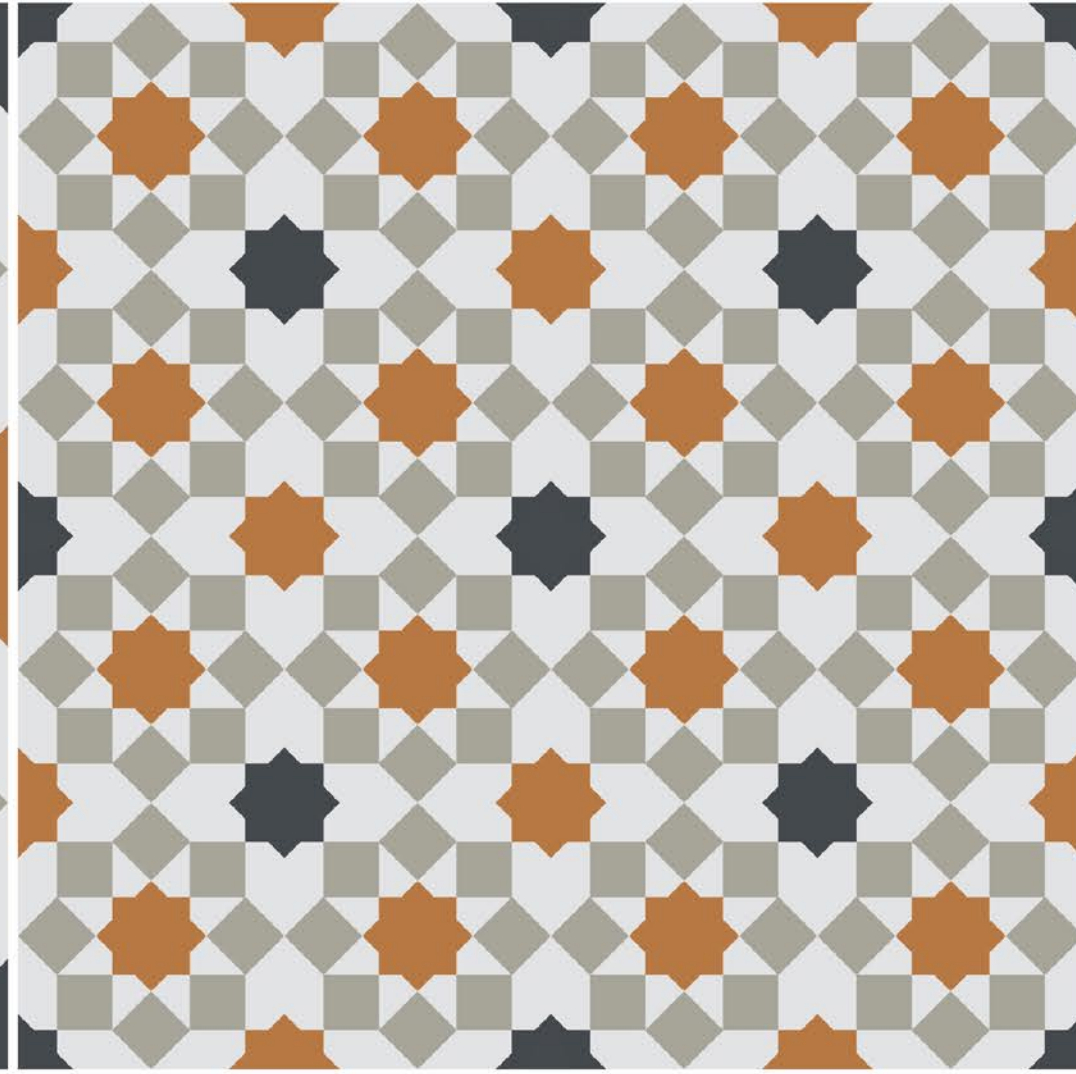
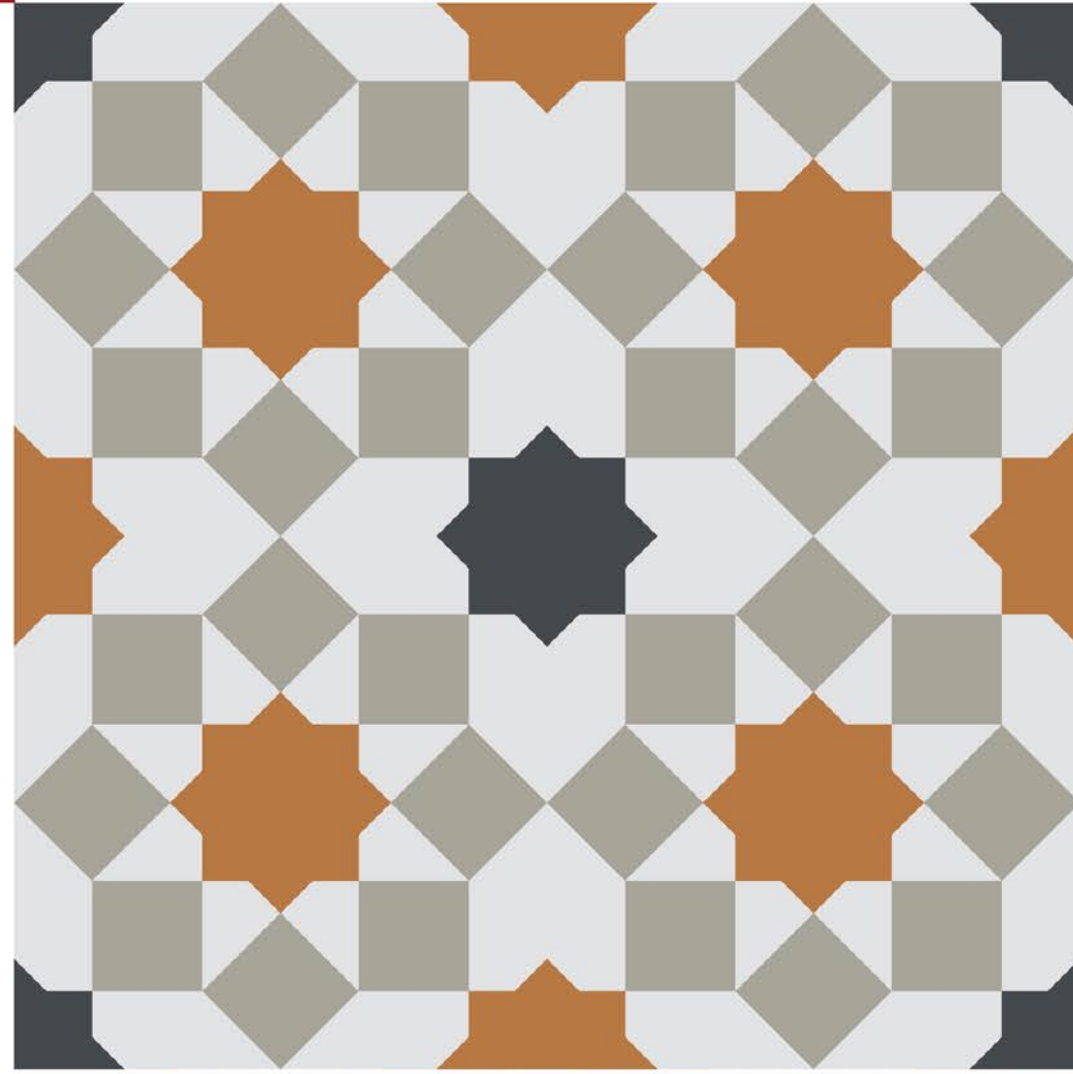


SIERRA COPPER



ETHNIC 1.0

MARAKKECH
KINGRES
PORCELAIN
COLLECTION



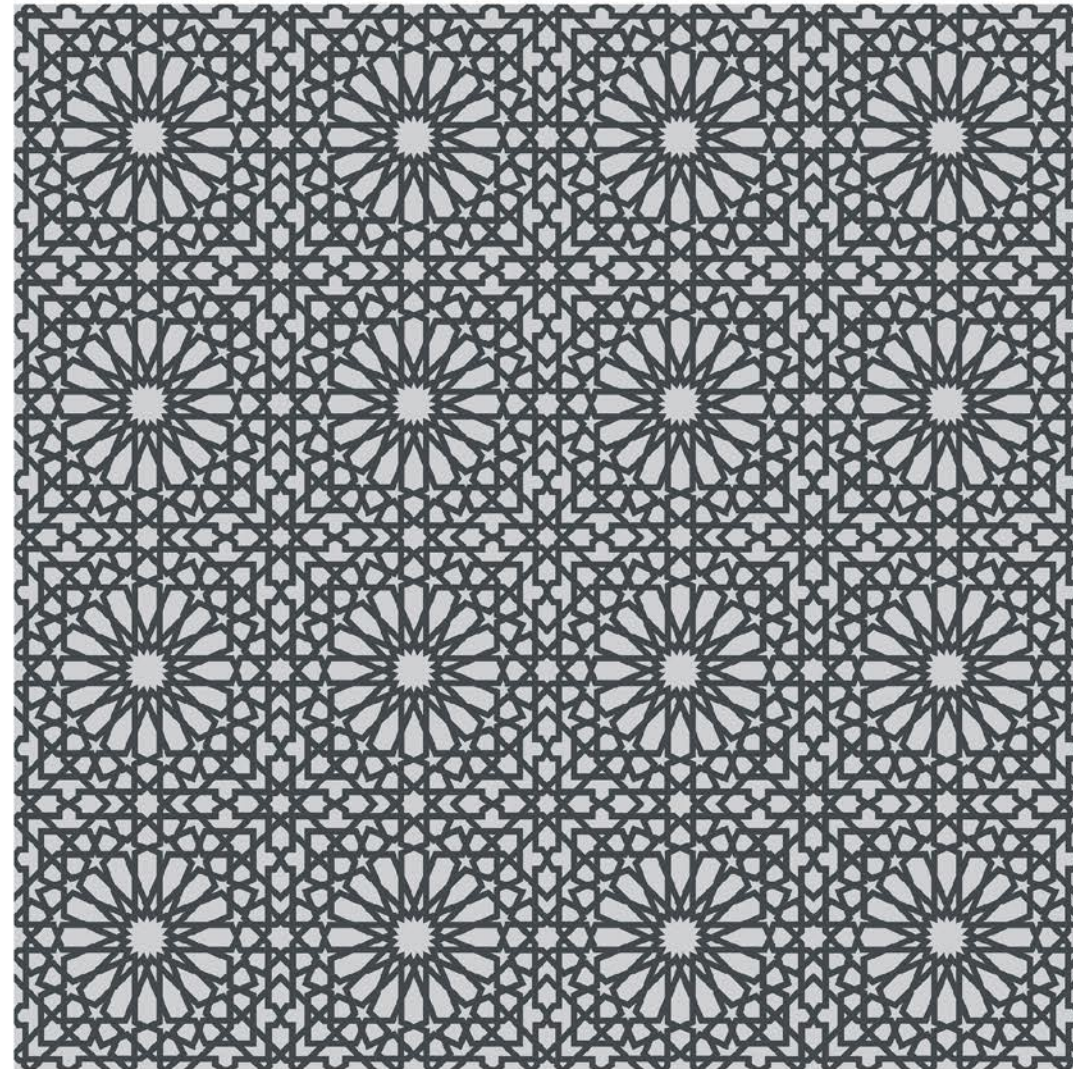
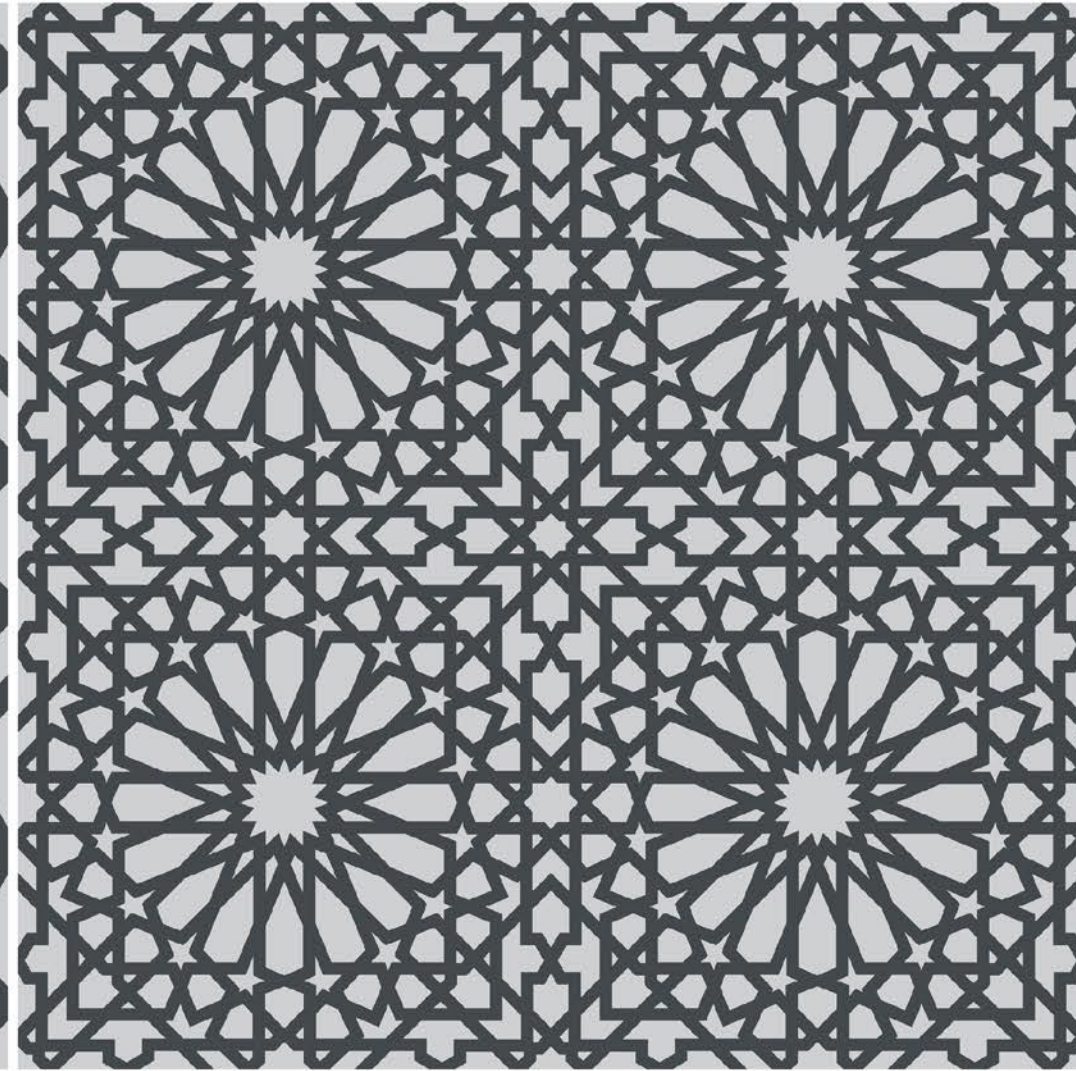
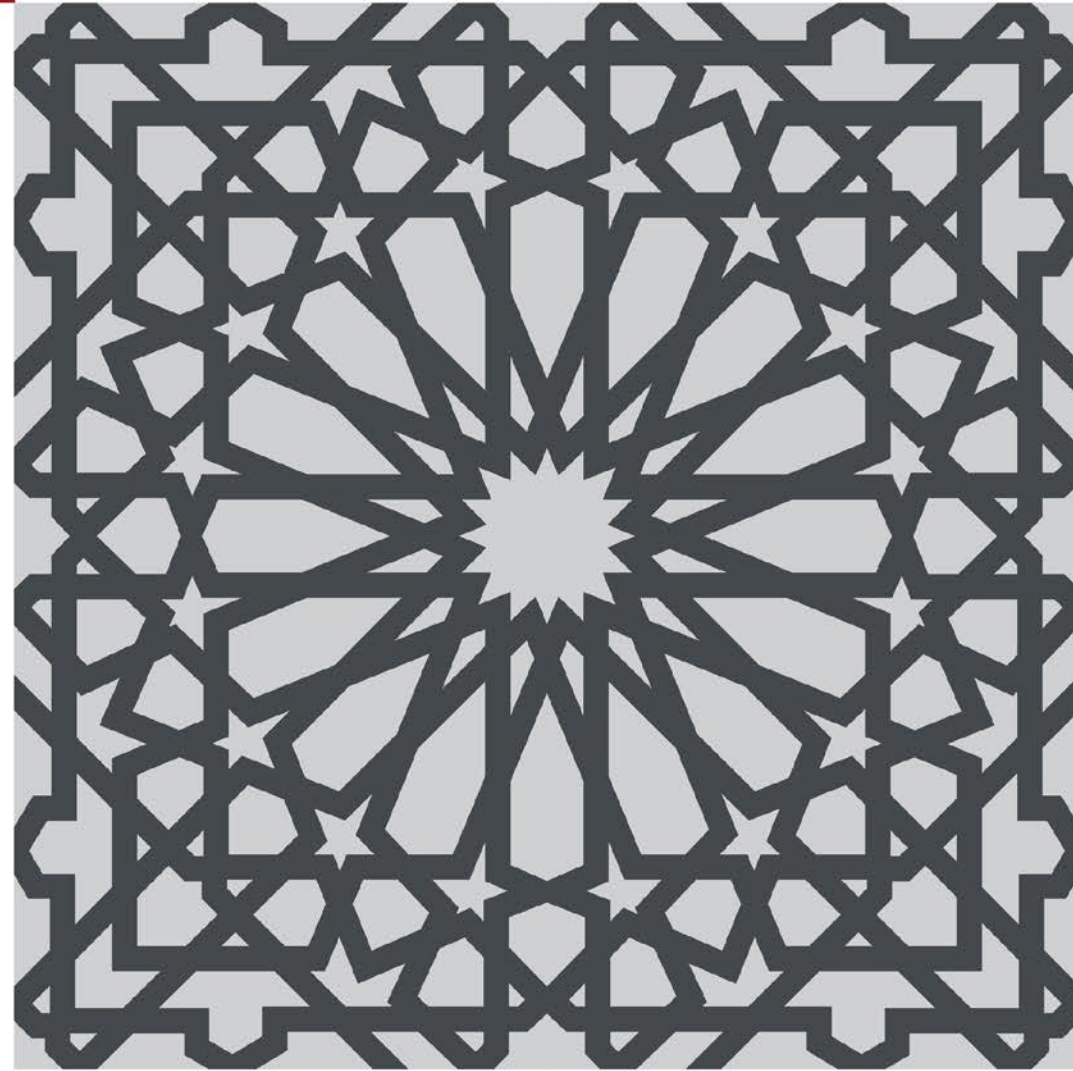
**SIERRA
COPPER I**
A29W21LG

**SIERRA
COPPER II**
A29W22LG

**SIERRA
COPPER III**
A29W23LG



BELLISA SILVER



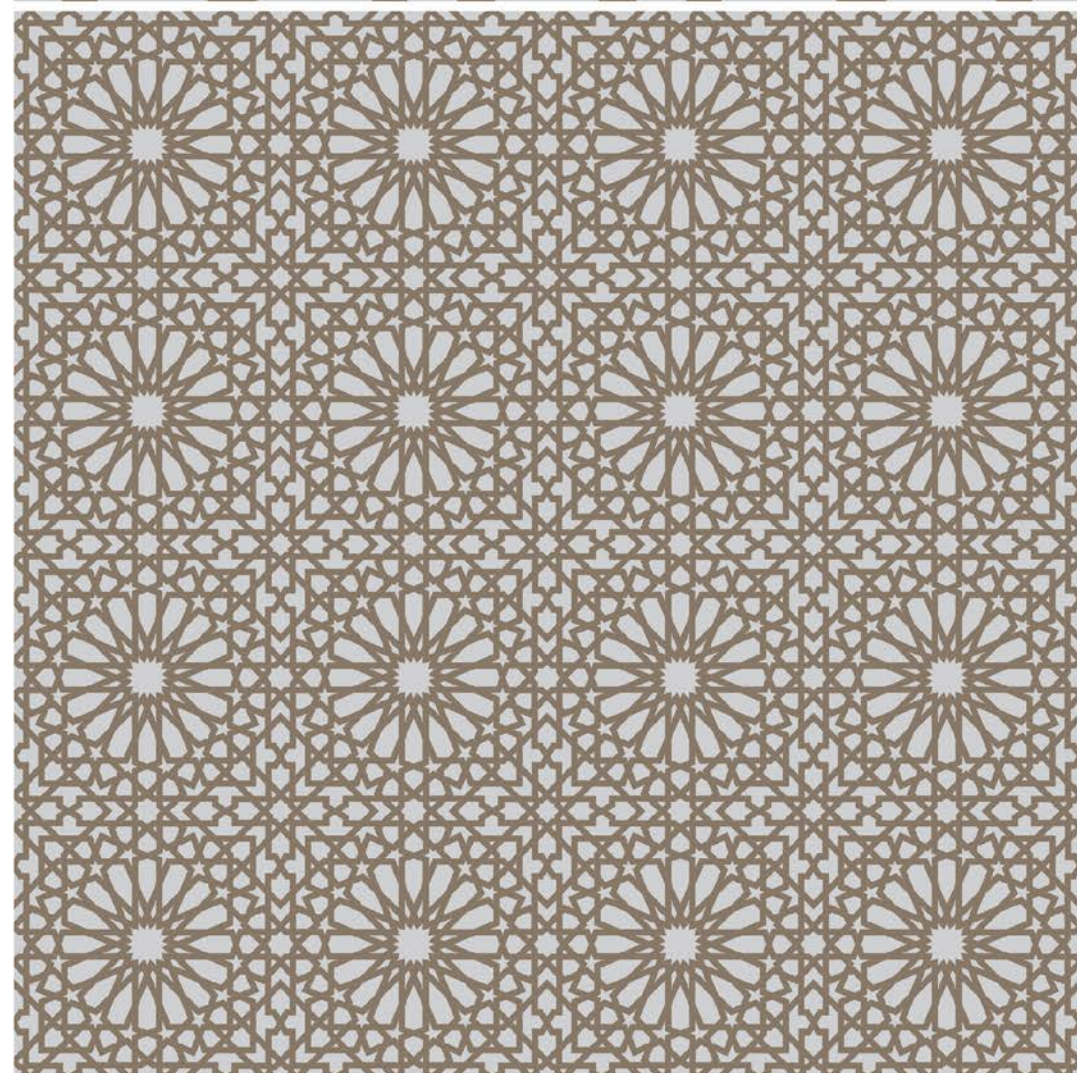
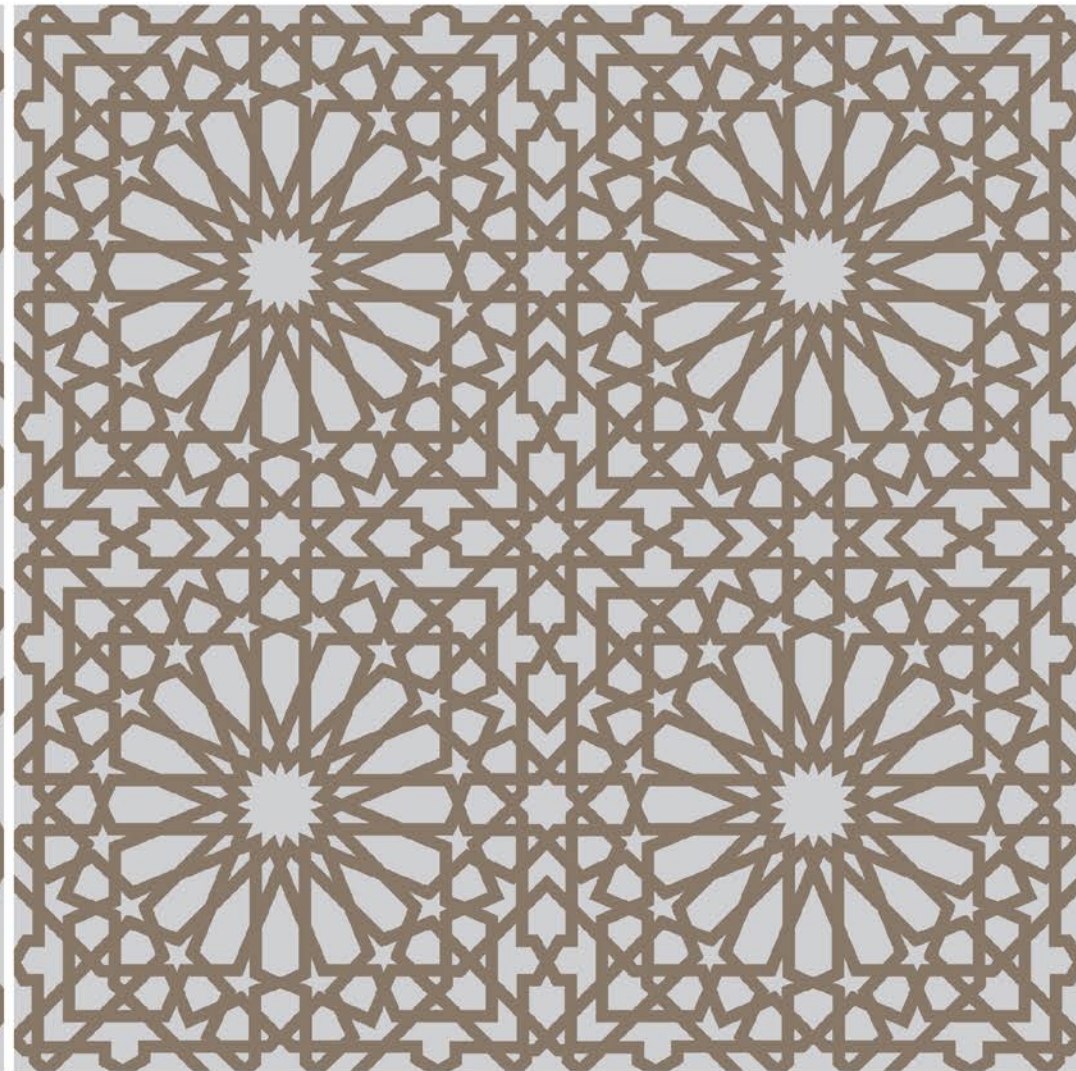
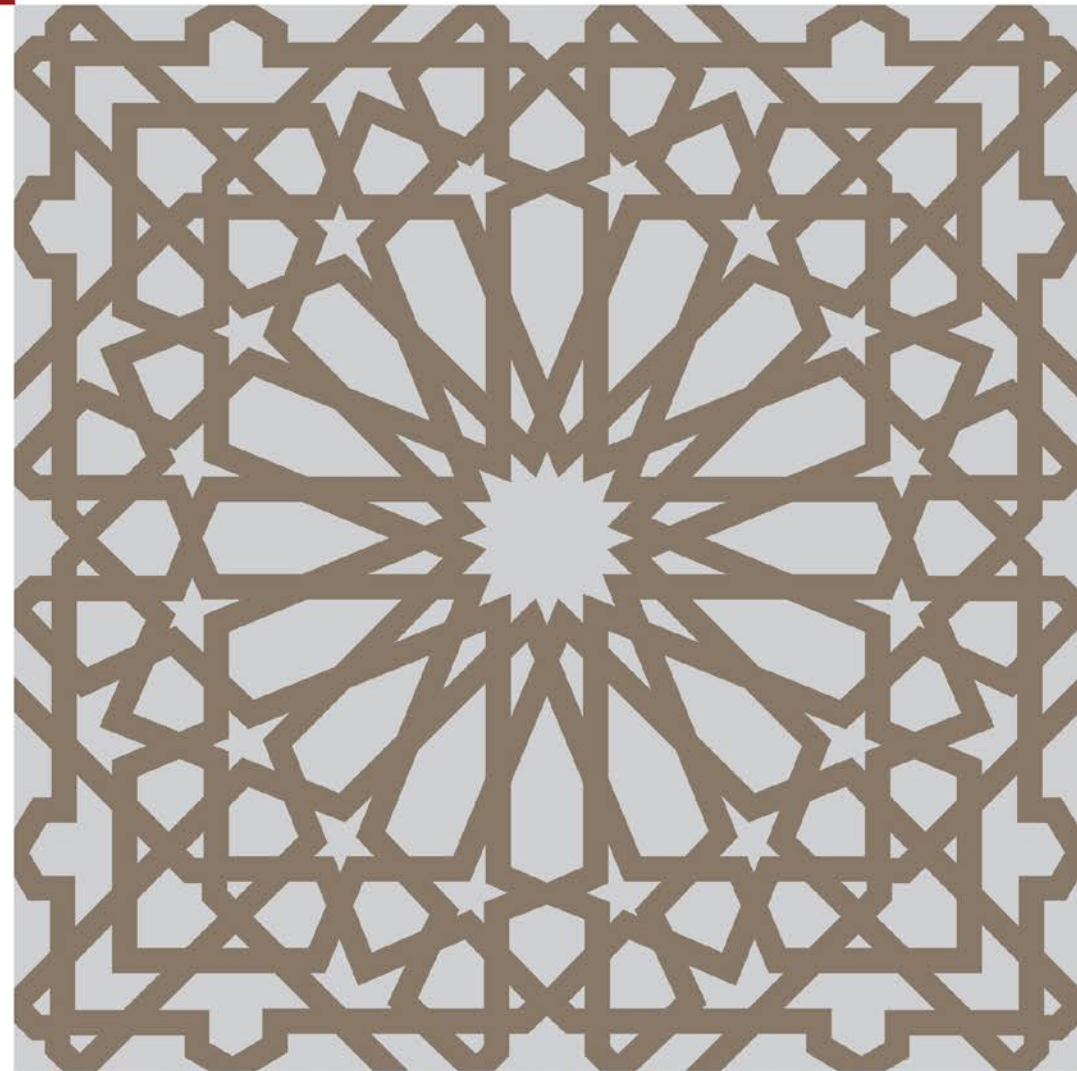
BELLISA
SILVER I
A29W31DG

BELLISA
SILVER II
A29W32DG

BELLISA
SILVER III
A29W33DG



BELLISA COPPER



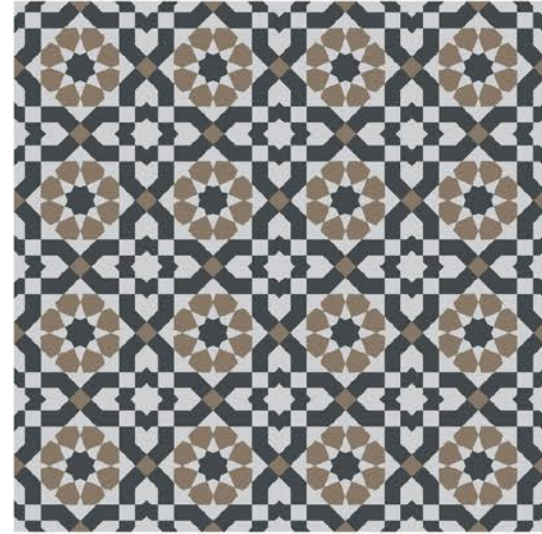
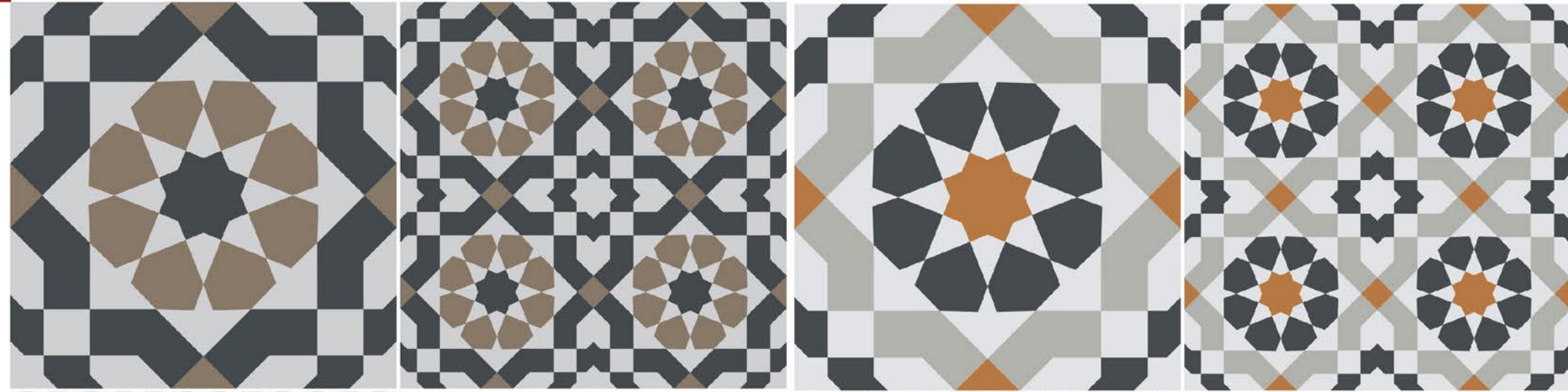
BELLISA
COPPER I
A29W31LG

BELLISA
COPPER II
A29W32LG

BELLISA
COPPER III
A29W33LG



MARAKKECH



CATARINA
SILVER I
A29W11DG

CATARINA
SILVER II
A29W12DG

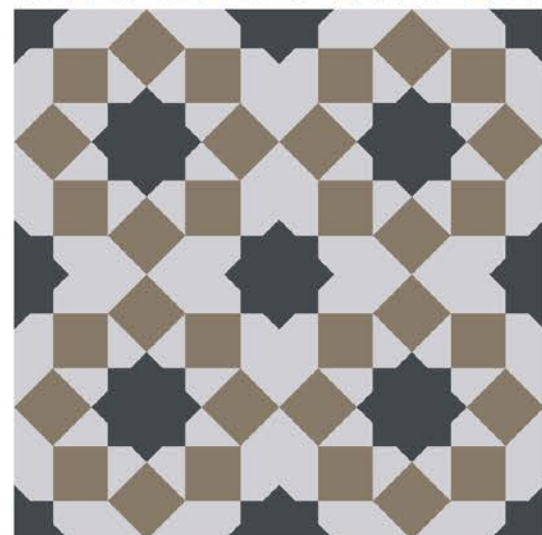
CATARINA
SILVER III
A29W13DG



CATARINA
COPPER I
A29W11LG

CATARINA
COPPER II
A29W12LG

CATARINA
COPPER III
A29W13LG



SIERRA
SILVER I
A29W21DG

SIERRA
SILVER II
A29W22DG

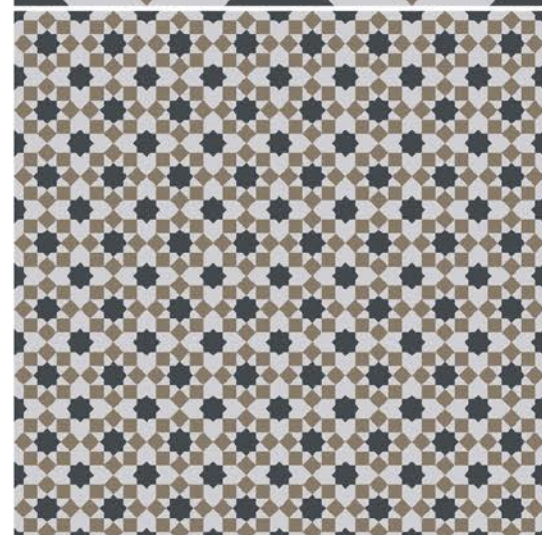
SIERRA
SILVER III
A29W23DG



SIERRA
COPPER I
A29W21LG

SIERRA
COPPER II
A29W22LG

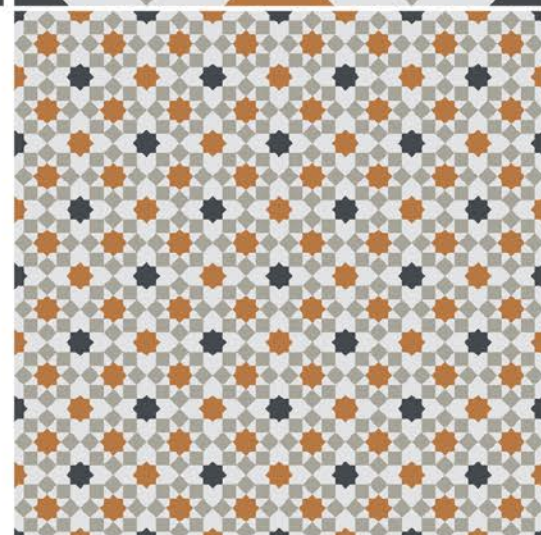
SIERRA
COPPER III
A29W23LG



SIERRA
SILVER I
A29W21DG

SIERRA
SILVER II
A29W22DG

SIERRA
SILVER III
A29W23DG



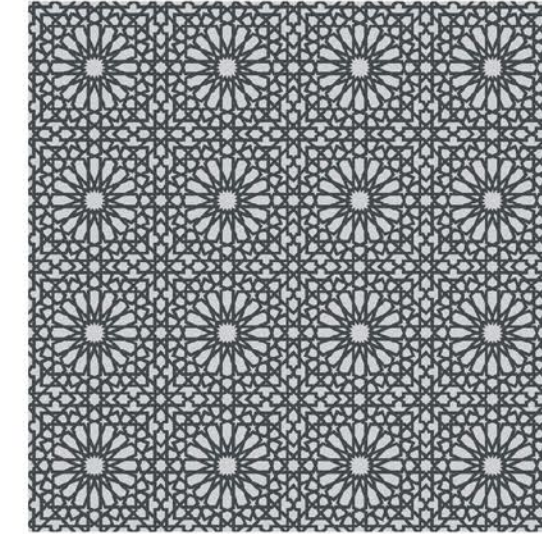
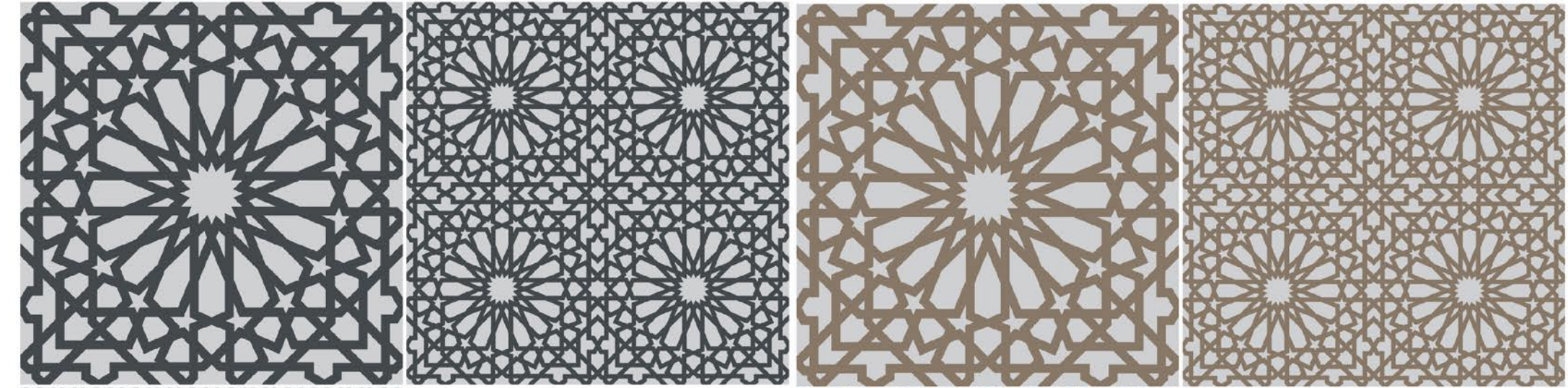
SIERRA
COPPER I
A29W21LG

SIERRA
COPPER II
A29W22LG

SIERRA
COPPER III
A29W23LG

ETHNIC 1.0

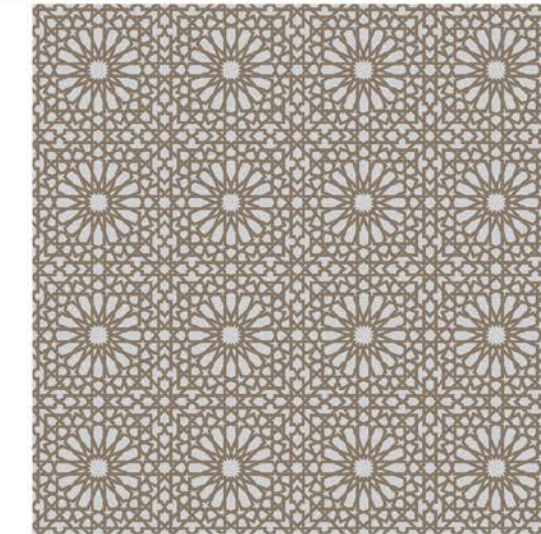
MARAKKECH KINGRES PORCELAIN COLLECTION



BELLISA
SILVER I
A29W31DG

BELLISA
SILVER II
A29W32DG

BELLISA
SILVER III
A29W33DG



BELLISA
COPPER I
A29W31LG

BELLISA
COPPER II
A29W32LG

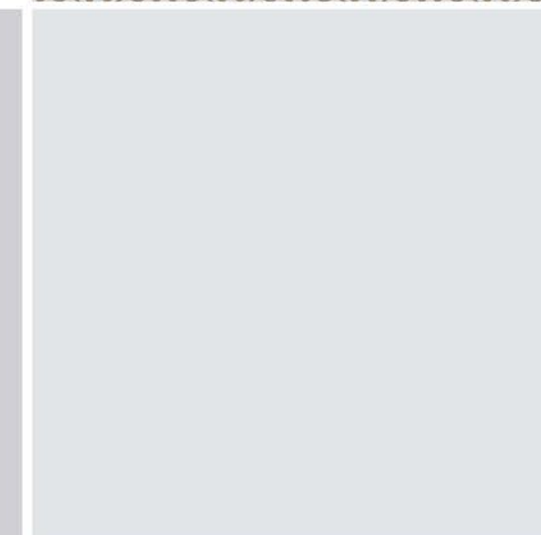
BELLISA
COPPER III
A29W33LG



COAL
A29TE1D

SILVER
A29TE4D

BROWN
A29TE3D



ICE
A29TE8L

COPPER
A29TE3L

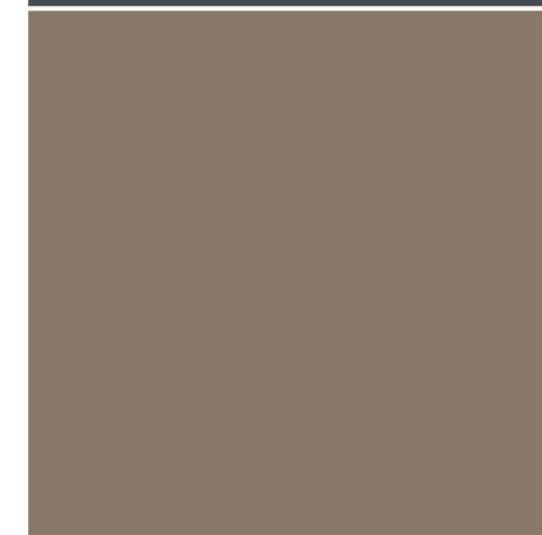
GREY
A29TE4L



ICE
A29TE8L

COPPER
A29TE3L

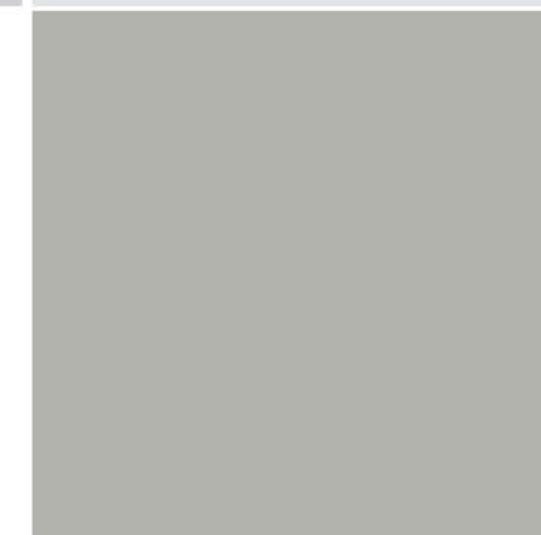
GREY
A29TE4L



COAL
A29TE1D

SILVER
A29TE4D

BROWN
A29TE3D



ICE
A29TE8L

COPPER
A29TE3L

GREY
A29TE4L

TECHNICAL SPECIFICATIONS

DESCRIPTION	STANDARD TEST	MEASUREMENT UNIT	ISO STANDARD REQUIREMENT	KIMGRES
Length & Width	MS ISO 10545 - 2	mm	± 0.5% Max	± 0.5% Max
Thickness	MS ISO 10545 - 2	mm	± 5.0% Max	± 5.0% Max
Sides Straightness	MS ISO 10545 - 2	mm	± 0.5% Max	± 0.5% Max
Rectangularity	MS ISO 10545 - 2	mm	± 0.6% Max	± 0.6% Max
Flatness: a) Centre Curvature b) Edge Curvature c) Warpage	MS ISO 10545 - 2 MS ISO 10545 - 2 MS ISO 10545 - 2	mm mm mm	± 0.5% Max ± 0.5% Max ± 0.5% Max	± 0.5% Max ± 0.5% Max ± 0.5% Max
Surface Quality	MS ISO 10545 - 2	One major area of tiles	≥ 95% free from visible defect	≥ 95% free from visible defect
Water Absorption	MS ISO 10545 - 3	Mass	≤ 0.5%	≤ 0.5%
Modulus of Rupture	MS ISO 10545 - 4	N/mm ²	≥ 35N/mm ²	≥ 35N/mm ²
Deep Abrasion	MS ISO 10545 - 6	mm ³	≤ 175 mm ³	≤ 175 mm ³
Surface Abrasion PEI ASTM C1027	MS ISO 10545 - 7	Visual Check	Manuf. to state Abrasion Class, Cycle Passed	Manuf. to state Abrasion Class, Cycle Passed
Crazing Test	MS ISO 10545 - 11	Visual Check	Not Applicable for porcelain tiles	Not Applicable for porcelain tiles
Frost Resistance	MS ISO 10545 - 12	Visual Check	Required	Required
Chemical Resistance (Low Cons.)	MS ISO 10545 - 13	Visual Check	Manuf. to state	Manuf. to state
Chemical Resistance (Household/Swimming Pool)	MS ISO 10545 - 13	Visual Check	Max Visible Change On Cut Side	Max Visible Change On Cut Side
Stain Resistance	MS ISO 10545 - 14	Visual Check	Class 3 Min	Class 3 Min
Coefficient of Friction AS/NZS 4586-1999 App.D.	MS ISO 10545 - 17	Manuf. to state	Manuf. to state	Manuf. to state

Kimgres Porcelain tiles conform to MS ISO 13006:2003, Group BIa, E< I=0.5%

Each different tiles series is produced to meet different performance requirements. For specific product technical performance, please request from Kimgres sales team or their agent or distributor.

Colour Variations: Since the colour reproduction in this printed piece will vary from the actual tile colours, final selection should be made from tile samples. Colour, shade and glaze variations may exist due to the inherent characteristics of porcelain tile.

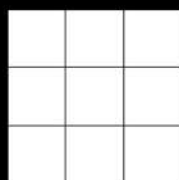
STANDARDS

MS ISO/IEC GUIDE 65 - 2000
PC 05102004 CB 01

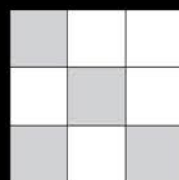
Due to the low porosity of porcelain tiles, an Improved High Performance Cementitious adhesive in accordance to BS EN 12004 & ISO 13007-1 is highly recommended for proper installation. Products that meet this standard are available amongst leading adhesive manufacturers. Please seek expert advice from adhesive manufacturers for proper selection and application.

CERTIFIED TO ISO 13006 : 2003
CERT. NO. : PC000101

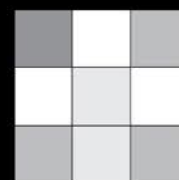
SHADE AND TONALITIES



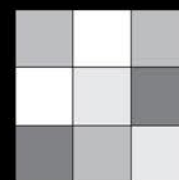
V1
EVEN
APPEARANCE



V2
LIGHT
VARIATION



V3
MEDIUM
VARIATION



V4
STRONG
VARIATION



HEAD SALES OFFICE

KIMGRES MARKETING SDN BHD
LOT 5, JALAN KILANG / JALAN 217,
46050 PETALING JAYA, SELANGOR, MALAYSIA

T +(60 3) 7783 9811

F +(60 3) 7783 9511



WWW.KIMGRES.COM